

Guide on Navigating SLS and Checking if Assignments have been Completed

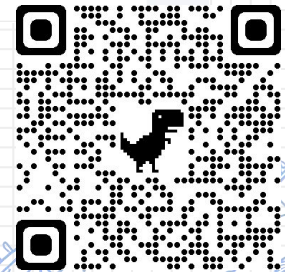


Accessing Student Learning Space (SLS)

A login form for the Student Learning Space. At the top, there is a blue and yellow lock icon. Below the icon, the word "Login" is written in bold black text. The form contains two input fields: "Username" and "Password". The "Username" field has a light gray border and a vertical cursor. The "Password" field has a light gray border and a vertical cursor. Below the input fields is a blue rounded button with the word "LOGIN" in white capital letters. Underneath the button is a link that says "Forgot Password" in a smaller, lighter blue font.

Link: <https://vle.learning.moe.edu.sg/login>

QR code:



Flip to the password card given to you in your handbook

PASSWORDS		MARY TAN (1CO)
Website / Account	Username	Password
SLS	MARYT4567A	Student2021
Gmail	MARYT4567A @kranjipri.edu.sg	
SSOE	T1234567A	Abcd1234 (default)
		Student2021

Username: First 5 characters of name +
Last 5 characters of BC No.

Refer to the password card in your
handbook 😊

Example: Mary Tan + T1234567A

MARYT4567A

Password: **Student2021**



Login

Username

Password

LOGIN

[Forgot Password](#)



If you have difficulty resetting your password,
refer to [Login Troubleshooting Tips](#) for ways to
get help.

Where can I find my assignments?

Step 1: Click "To Do"

Class Groups **To Do**

This shows a listing of assignments that are in progress. To see all your assignments, go to your Assignment List.

Sample HBL Assignment

JTP Test

05 MAY 2021 01:10 PM → 14 MAY 2021 11:59 PM

INCOMPLETE

OPEN

Step 2: Click "OPEN"

Measurement of Time in ...

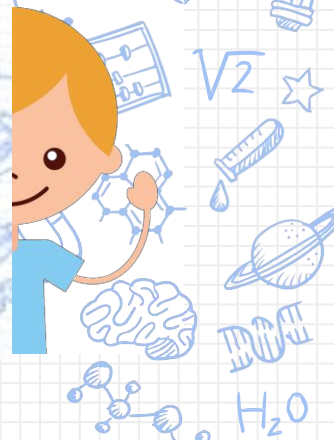
JTP Test

04 MAY 2021 11:00 AM → 01 JUN 2021 11:59 PM

INCOMPLETE

OPEN

12



Sample HBL Assignment



Sample HBL Assignment

14 May 2021
09:03 AM




21 May 2021
11:59 PM

COMPLETION STATUS



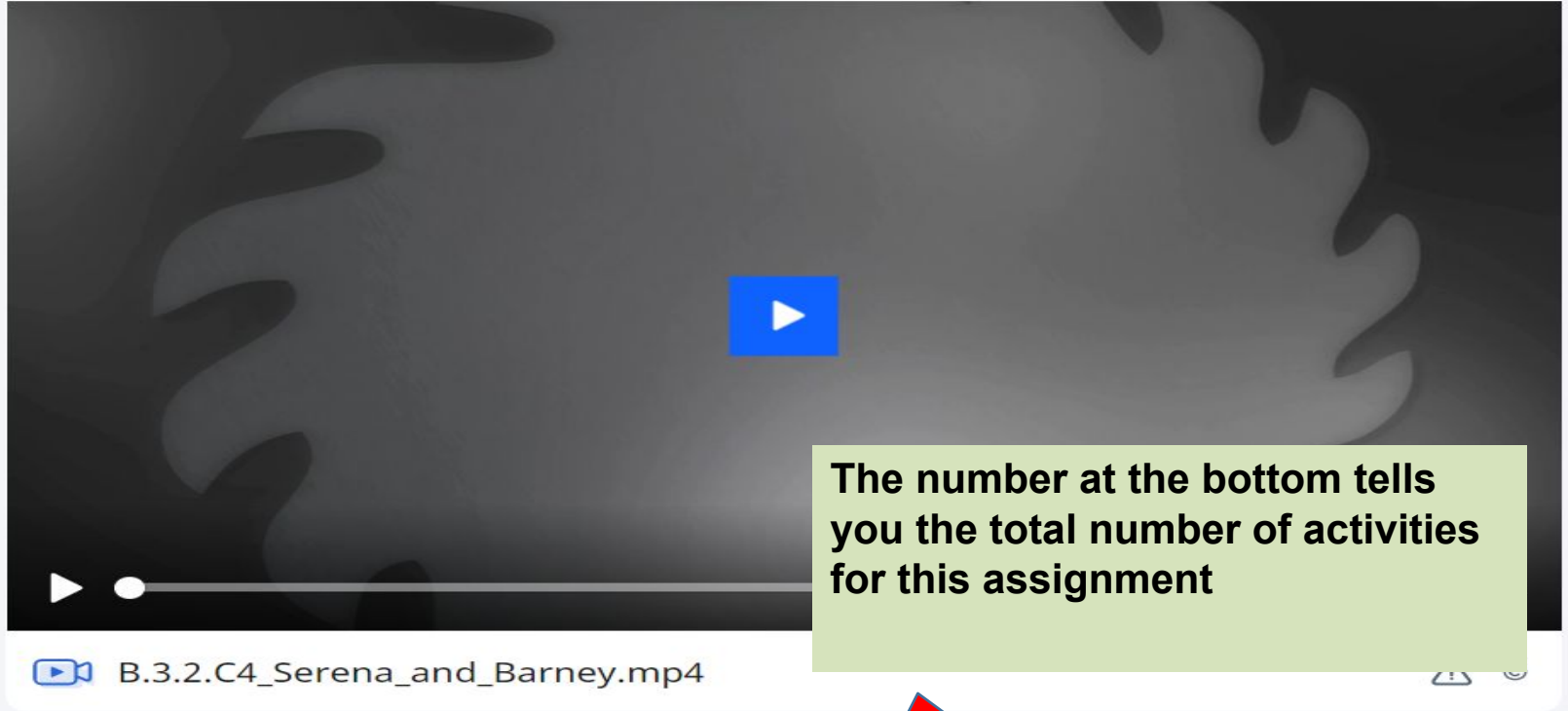
SHARING ACCESS

 DISABLED

ENTER

Click on enter to begin

Watch and learn how to introduce yourself



The number at the bottom tells you the total number of activities for this assignment

Watch and learn how to introduce yourself



Click on the 'next arrow' to move on to the next activity

 B.3.2.C4_Serena_and_Barney.mp4



< 1 / 6





You have reached the end of the assignment.

You have completed 3 out of 3 activities.

You will see this message when you have successfully completed all the activities in your assignment.

MARKED AS
COMPLETED

05 MAY 2021 01:29 PM

EXIT ASSIGNMENT

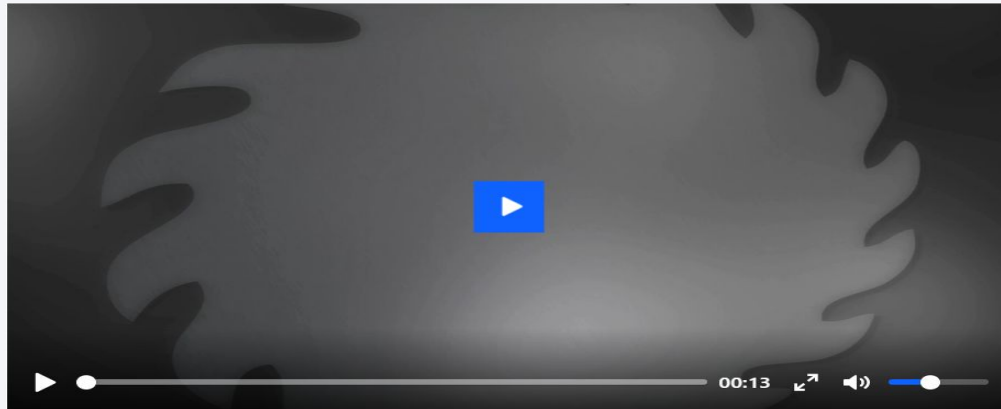
Click "EXIT
ASSIGNMENT"



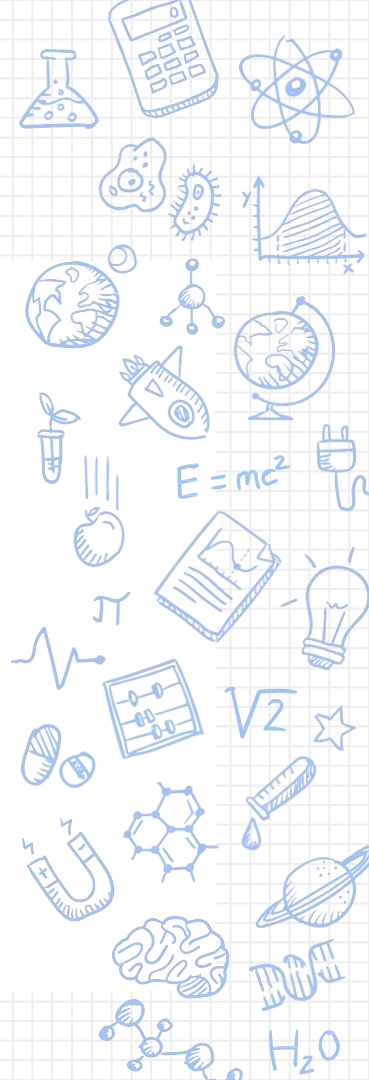
Types of activities in SLS

1. Watching a video

Watch and learn how to introduce yourself



B.3.2.C4_Serena_and_Barney.mp4



Types of activities in SLS

2. Submitting an audio recording

Make an audio recording of your self-introduction



Q1

INSTRUCTIONS

You may record an audio clip of up to 10 minutes or upload a file with your answer.

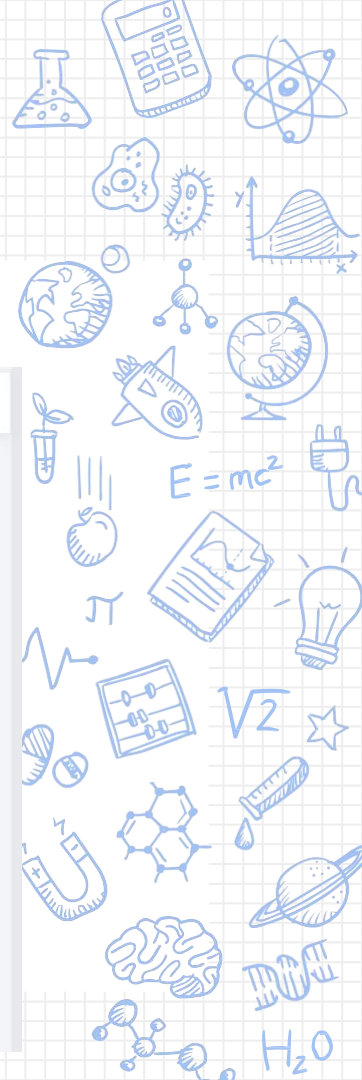
Follow the examples in the video. Work with a partner and introduce yourselves to each other. Then, record your introduction.

[Read Less](#)



SAVE AS DRAFT

SUBMIT



Make an audio recording of your self-introduction

Q1

INSTRUCTIONS

You may record an audio clip of up to 10 minutes or upload a file with your answer.

Follow the examples in the video. Work with a partner and introduce yourselves to each other. Then, record your introduction.

[Read Less](#)



Click on the 'microphone' icon to record your voice



SAVE AS DRAFT

SUBMIT

A screenshot of a recording interface. At the top left, there is a microphone icon and a paperclip icon. Below these is a large white text area. At the bottom of the interface, there are two buttons: a dark grey button with a floppy disk icon and the text "SAVE AS DRAFT", and a blue button with the text "SUBMIT". To the left of the bottom buttons is a timer showing "00:07". To the right of the "SUBMIT" button is a blue square button with a white square in the center, representing a stop button. A purple arrow with a white outline points from the right towards this stop button.

Click on the 'stop' button to end your recording

Follow the examples in the video. Work with a partner and introduce yourselves to each other. Then, record your introduction.

Read Less



A screenshot of a digital interface for audio recording. At the top, there are icons for a microphone and a paperclip. Below these is a video player with a play button, a progress bar, and a duration of 00:20. Underneath the video player is a file entry for 'recording.mp3' with a microphone icon on the left and a trash can icon on the right. A large purple arrow with a white outline points from the video player area down towards the 'SUBMIT' button.



SAVE AS DRAFT

SUBMIT

Remember to click on the 'submit' button to submit your audio recording

< 2 / 6 >

Types of activities in SLS

3. Drag and drop questions

Q1

① INSTRUCTIONS

Match the empty boxes in the image with the options below by selecting the empty box and the correct option.

Drag and Drop the text "YES" beside the complete super sentences.



Put a **YES!** beside the complete sentences to show that they are super.

The ants are

The ants are eating their jelly.

The Queen is laying her eggs.

Click on **Show Options**



Show Options



Click on **“YES”**

Hide Options



YES

YES

YES

Super Sentence Sort

Click on this empty box to 'drop' your answer

ES! beside the complete sentences that they are super.

The ants are

The ants are eating their jelly.

The Queen is laying her eggs.

Types of activities in SLS

4. Fill-in-the-blanks Questions

Super Sentence Fillers

Q1

1. Click here
2. Type in the answer “**Luke**”

|answer



[Luke/ The Cat] played soccer.

MARKS

[1]



SAVE AS DRAFT

SUBMIT

Q1

Luke| [Luke/ The Cat] played soccer.

MARKS [1]



SAVE AS DRAFT

SUBMIT



Click **SUBMIT**

Types of activities in SLS

5. Draw and upload

Q1

INSTRUCTIONS

Upload a file with your answer. You can attach up to 10 files.

Draw your self portrait

Type answer here

Step 1: Click on the space here

MARKS [1]

 SAVE AS DRAFT

SUBMIT

Q1

INSTRUCTIONS

Upload a file with your answer. You can attach up to 10 files.

Draw your self portrait

Step 2: Click "Add drawing/image"

The image shows a rich text editor toolbar with various icons. The 'Add drawing/image' icon, which is a speech bubble with a palette inside, is circled in red. A red arrow points to this icon. The toolbar also includes icons for undo, redo, insert table, bold, italic, underline, text color, background color, bulleted list, numbered list, link, unlink, and comment. The text area below the toolbar is empty.

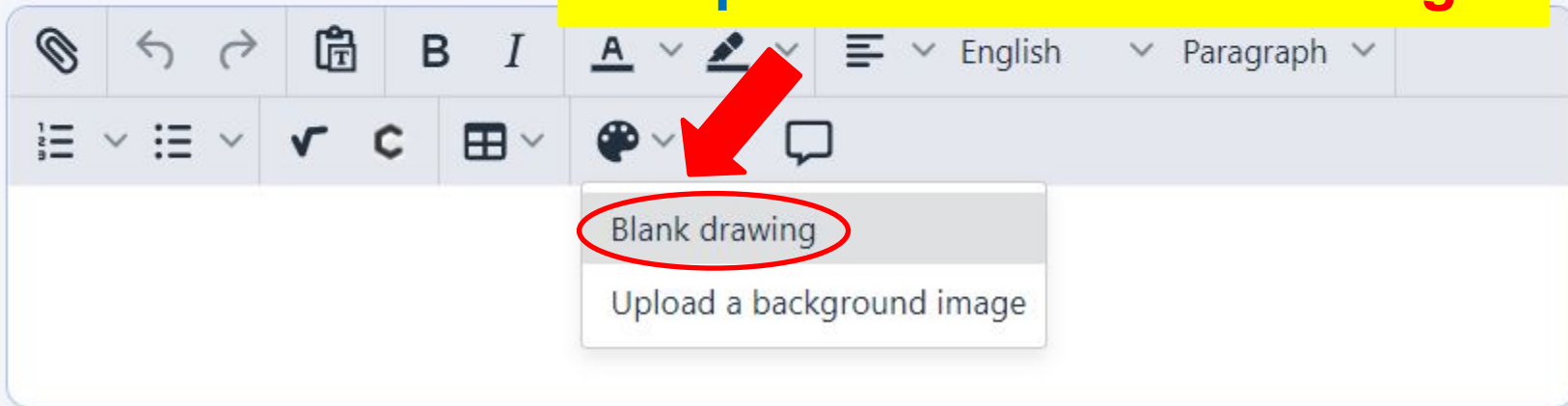
Q1

INSTRUCTIONS

Upload a file with your answer. You can attach up to 10 files.

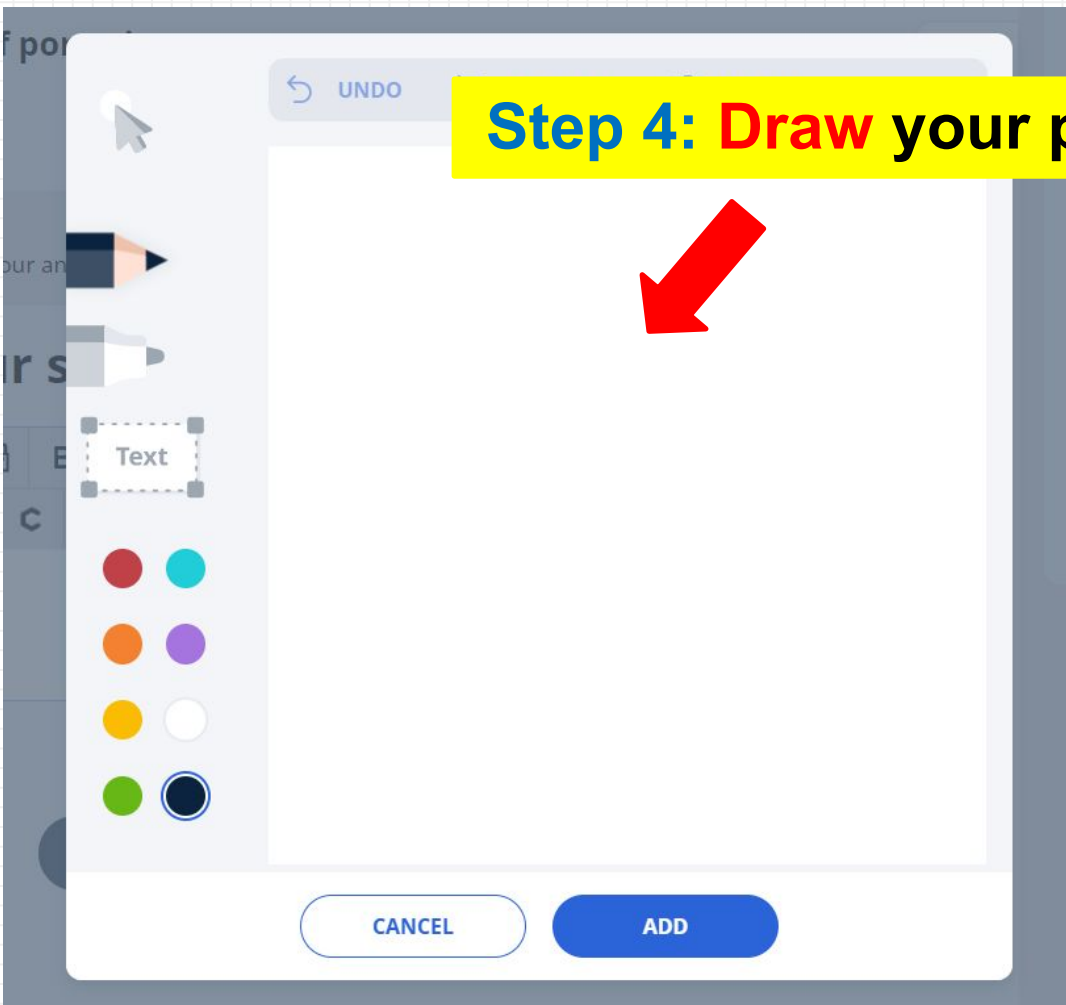
Draw your self portrait

Step 3: Click “Blank drawing”

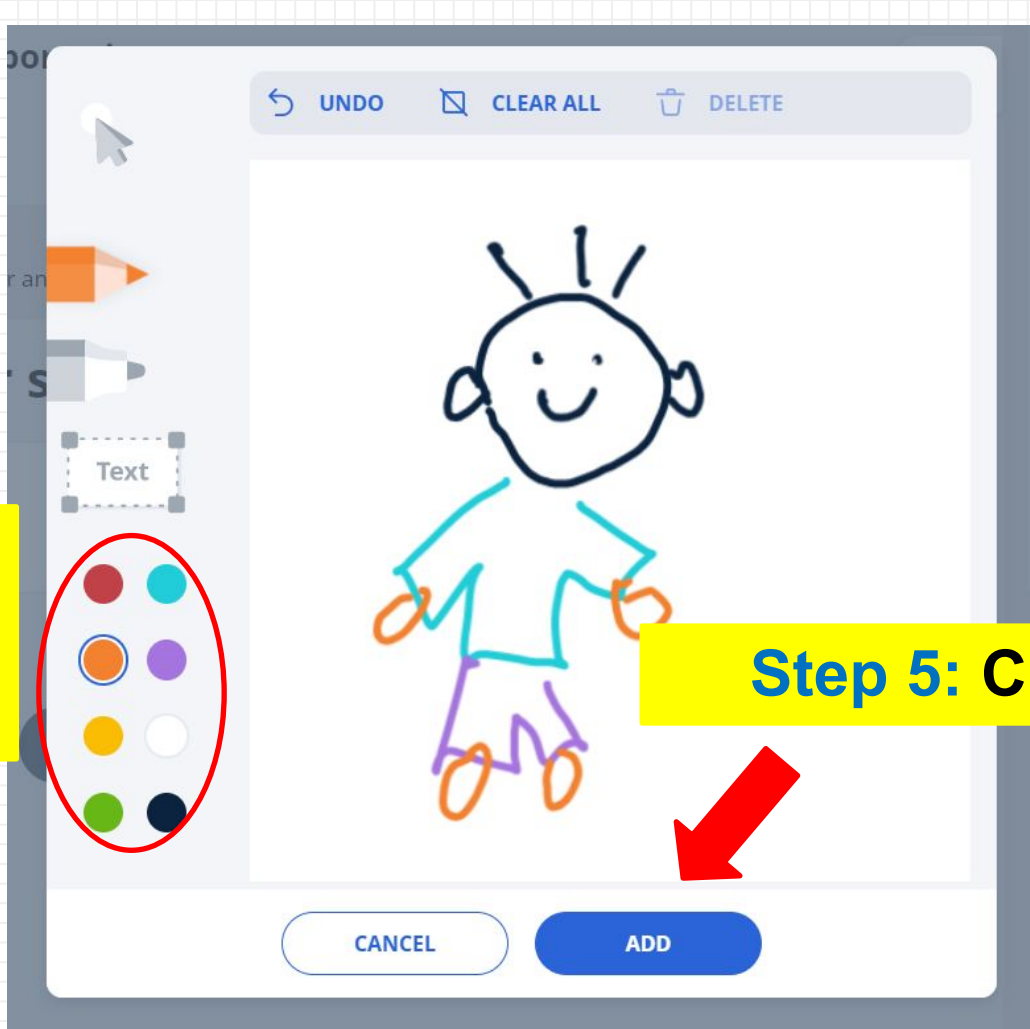


The image shows a drawing toolbar with various icons. A red arrow points to the palette icon, which has opened a dropdown menu. The menu contains two options: "Blank drawing" (highlighted with a red circle) and "Upload a background image".

Step 4: Draw your portrait here!



You can use
different
colours!



Step 5: Click **“ADD”**

Step 6: Click "SUBMIT"

Types of activities in SLS

6. Typing in your response to an open-ended question

What is your full name? What do you like about yourself?

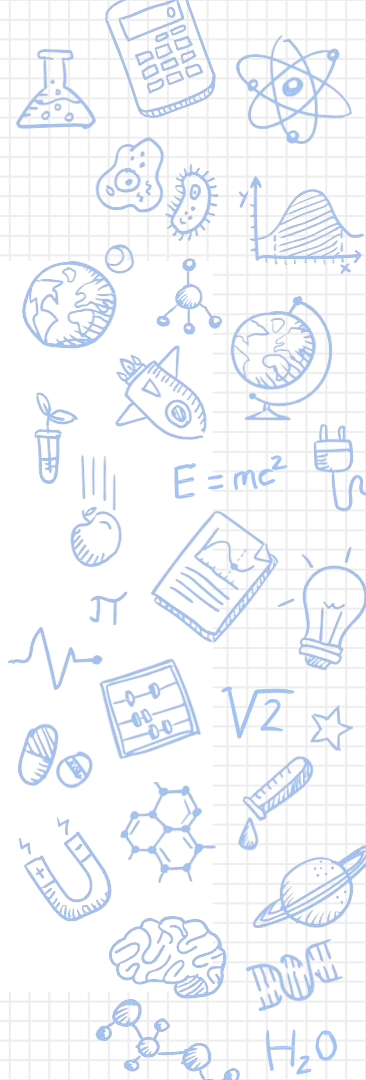
My full name is _____.

I like my _____. (eg. long hair, rosy cheeks, big eyes)

[Read Less](#)

Step 1: Click on the space here

Type answer here



Step 2: Write about yourself!

My full name is _____.

I like my _____.

MARKS [1]



SAVE AS DRAFT

SUBMIT

Step 3: Click "SUBMIT"

your full name? What do you like
yourself?

name is _____

big eyes)

name is _____

Submit Response? ✕

You have not attached a file. Please attach a file if you need to.

CANCEL

SUBMIT

Step 4: Click “SUBMIT”

Types of activities in SLS

8. Uploading photos / videos

Upload a photo of your work



Q1

INSTRUCTIONS

Upload a file with your answer. You can attach up to 10 files.

Please take a picture of page 20 of your workbook and upload here.

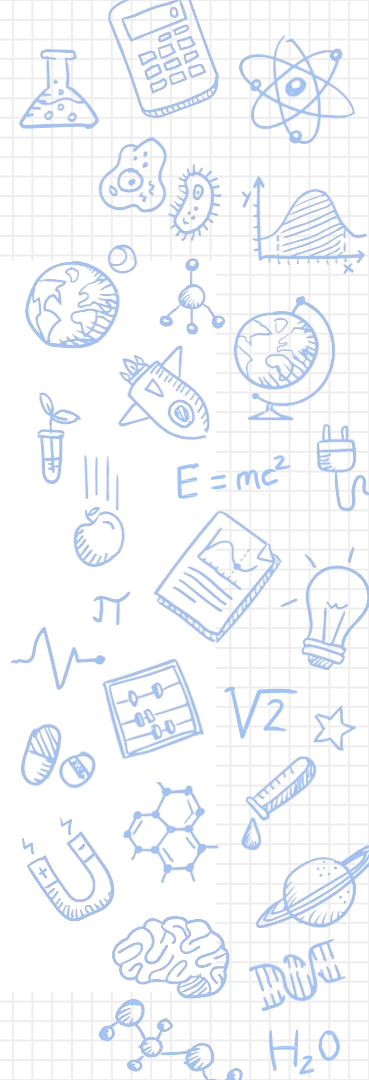
Type answer here

Step 1: Click on this space

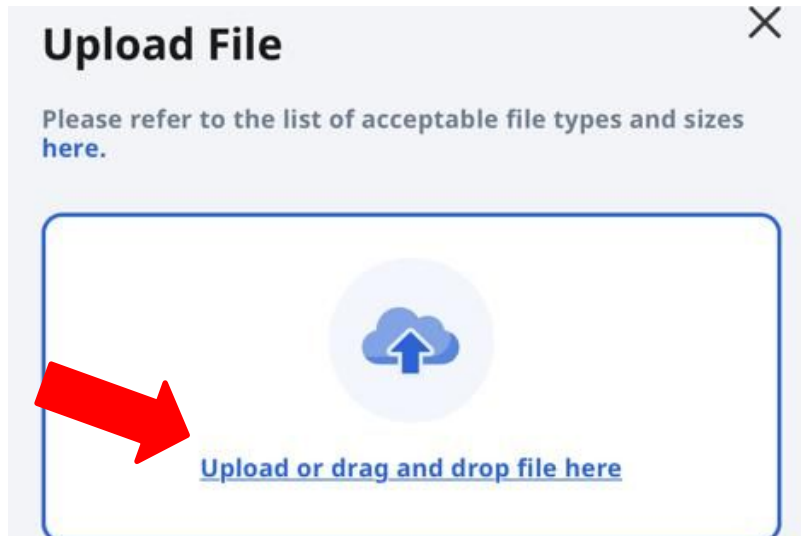


SAVE AS DRAFT

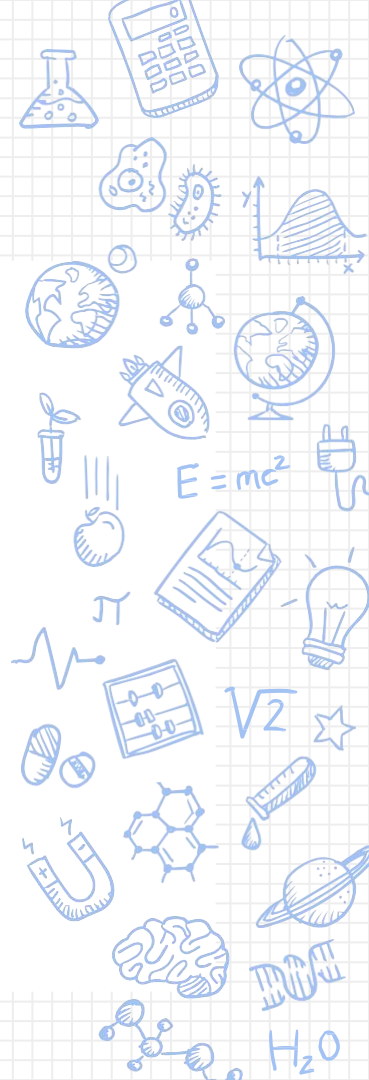
SUBMIT



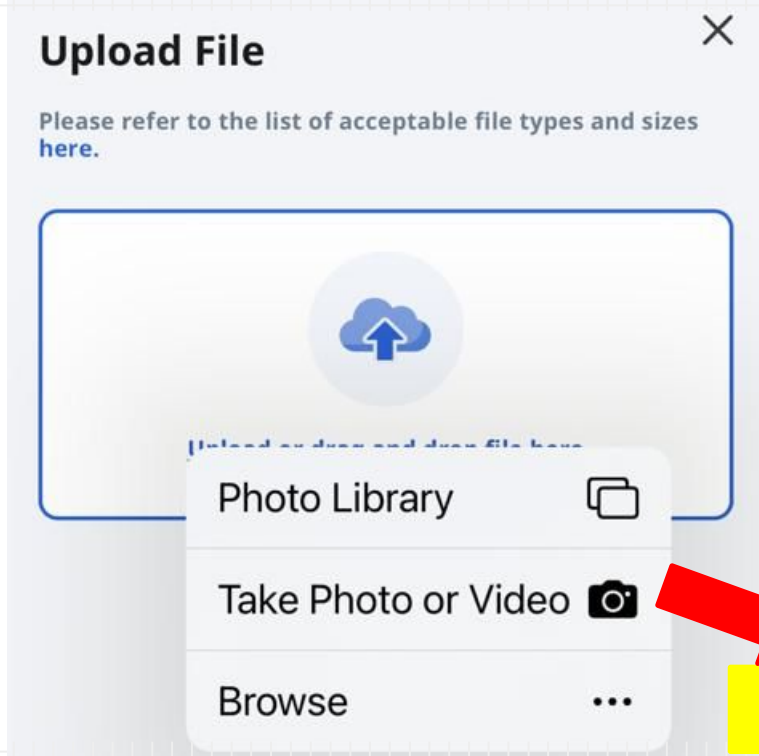
Types of activities in SLS



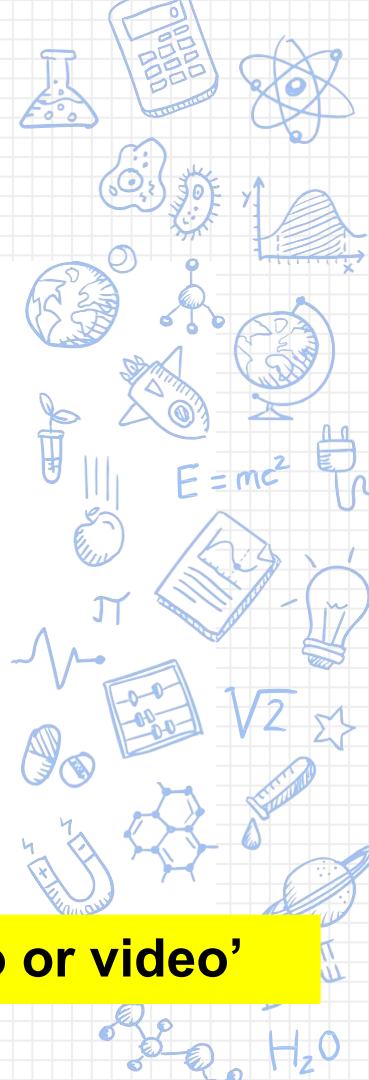
Step 3: Click on the upload file action



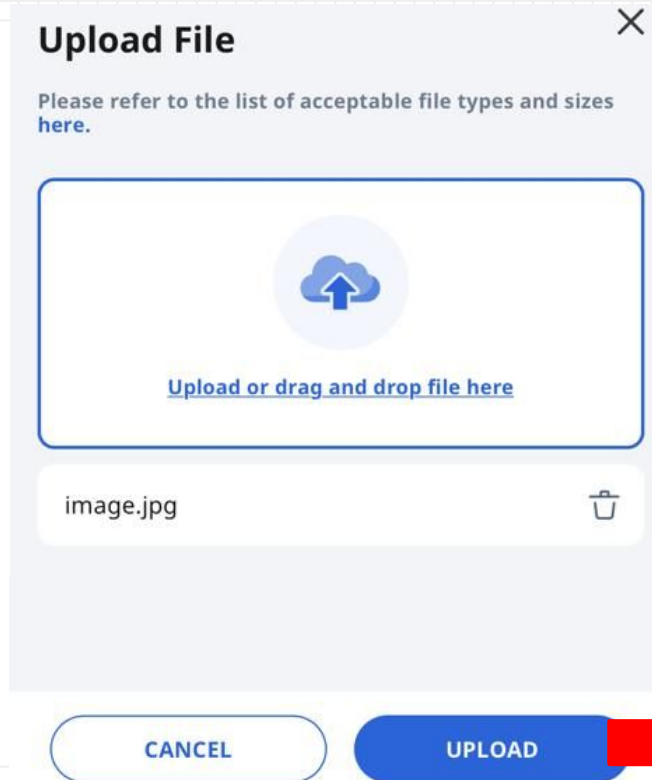
Types of activities in SLS



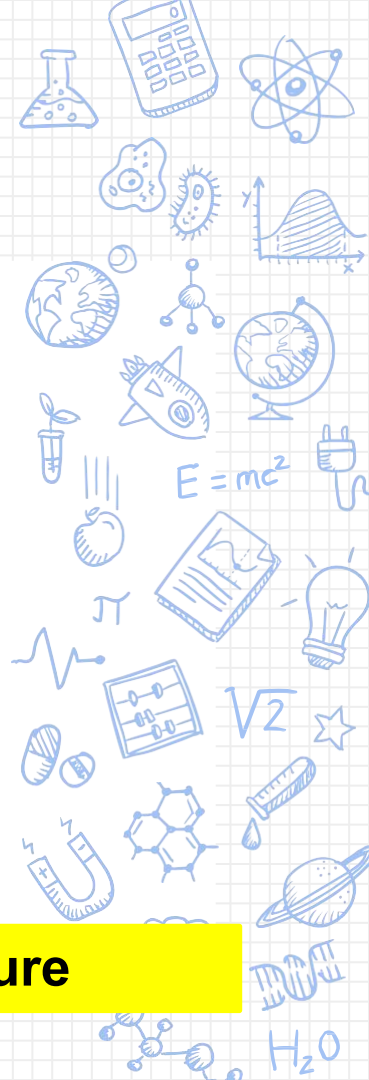
Step 4: Select 'take photo or video'



Types of activities in SLS



Step 6: Upload your picture



Frequently Asked Questions

1) I forgot my username. What should I do?

- Check that you have recorded your SLS username in your handbook
- Format of user name is first 5 characters of your name, and the last 5 characters of your BC number

Frequently Asked Questions

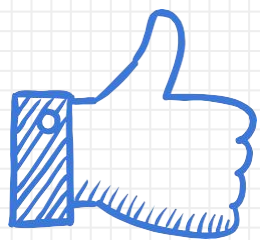
2) I forgot my password. What should I do?

4 Ways to reset password:

- password reset using password reset link (in school website)
- password reset using security questions
- call the school, **67634812**, to speak to the SLS administrator
- call the SLS Helpdesk at **67026513**

Important

- Please complete all your Home-Based Learning Assignments
- Your subject teachers will be tracking your progress and completion
- Do let your teacher know if you need any assistance in completing your Home-Based Learning assignments



Thank You!